



## The Old Watchmakers Shop, 2, Corner Cottages | Cropton, YO18 8HH

The Old Watchmakers Shop, 2 Corner Cottage is delightful Grade II listed cottage set in the picturesque village of Cropton within the North York Moors National Park. The village offers a traditional village Inn, church and active community village hall together with an abundance of walks and trails which are available to explore leading to through the beautiful forestry and moors.

The property dates back to the late 18th century and offers a wealth of charm and character.

There are cottage gardens to the rear and parking.

The accommodation comprises, sitting room, dining kitchen, lobby and bathroom to the ground floor. The bedroom is on the first floor with views over the charming cottage garden to the front..

The cottage is being offered with no onward chain.

**Guide Price £200,000**



# The Old Watchmakers shop, 2, Corner Cottages | Cropton.



## Accommodation Comprises

### Canopy Porch (handmade with local oak)

Leads to entrance door giving access to sitting room.

### Sitting Room

11'9" x 14'3" (3.58m x 4.34m)

With feature fireplace having stone surround, tiled hearth, stone inset, wood burning stove, exposed timbers to ceiling, understairs storage cupboard, windows to the front and side elevations, window seat, central heating radiator, laminate flooring, additional built in cupboard, latch door to staircase and dining kitchen.

### Dining Kitchen

12'3" x 7'1" (3.73m x 2.16m)

Comprising single drainer sink unit with mixer tap over and set within granite work surfaces with matching splash backs, wall and base units incorporating drawer compartments, space for slimline dishwasher and undercounter fridge, central heating radiator, spot lighting to ceiling, four ring hob with extractor canopy over, decorative glass splash back and built in oven. Window to the rear elevation, door to outside, door to lobby.

### Lobby

Built in airing cupboard housing hot water cylinder, door to bathroom. Electric boiler which runs the radiators.



## Bathroom

Comprising panelled bath, shower attachment and shower unit, complementary wall tiling, pedestal wash hand basin and low flush w.c., laminate flooring, shaver point, chrome ladder style heated towel rail, window to the rear elevation and tiled window sill.

## First Floor

Stairs to Bedroom.

## Bedroom

12' x 14'4" (3.66m x 4.37m)

With wood panelling to the ceiling, windows to the front and side elevations, central heating radiator, good sized built in cupboard with hanging space.

## Outside

Attractive good sized rear garden and parking area.

## Services

Mains electricity and water, shared septic tank drainage with adjoining 1 Corner Cottages.

Electric central heating.

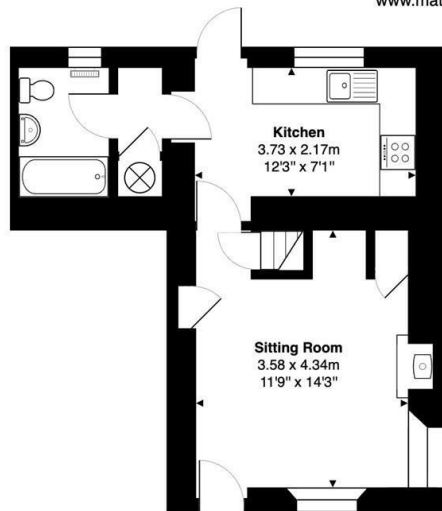


# The Old Watchmakers Shop, 2, Corner Cottages | Cropton

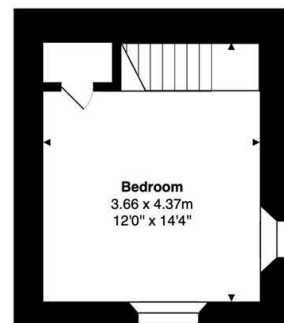
## The Old Watchmaker's Shop

Gross Internal Area: 47.2m<sup>2</sup> ... 508ft<sup>2</sup>

All measurements are approximated for display purposes only and should be independently verified  
Copyright © 2025 Matt Hillier Photographer  
www.matthillier.co.uk



Ground Floor



First Floor

### VIEWING

Strictly by appointment with the agents.

### COUNCIL TAX BAND

B

### ENERGY PERFORMANCE RATING

St Georges House 39 Market Place, Pickering, YO18 7AE

t: 01751 472724

e: pickering@boultoncooper.co.uk

Energy Efficiency Rating		Current	Potential
Very energy efficient - lower running costs			
(92 plus) A			
(81-91) B			
(69-80) C			
(55-68) D			
(39-54) E			
(21-38) F			
(1-20) G			
Not energy efficient - higher running costs			
England & Wales		EU Directive 2002/91/EC	

[boultoncooper.co.uk](http://boultoncooper.co.uk)



CONSUMER PROTECTION FROM UNFAIR TRADING REGULATIONS 2008

The description contained in this brochure is intended only to give a general impression of the property, its location and features, in order to help you to decide whether you wish to look at it. We do our very best to provide accurate information but we are human, so you should not allow any decisions to be influenced by it. For example any measurements are approximate and, where such things as central heating, plumbing, wiring or mains services are mentioned, we would advise you to take your own steps to check their existence and condition. Although we cannot accept any responsibility for any inferences drawn from this brochure or any inaccuracy in it, we shall always try to help you with any queries.

BoultonCooper for themselves and for the vendors or lessors of the property/properties, whose agents they are, give notice that (i) the particulars are produced in good faith, are set out as a general guide only and do not constitute any part of the contract; (ii) no person in the employment of BoultonCooper has any authority to make or give representation or warranty whatever in relation to this/these property/properties.

BC  
Est. 1801